



311SM702-T



Actual product appearance may vary.

SM Series Subminiature Basic Switch, Single Pole Double Throw (SPDT), 250 Vac, 4 A, Straight Lever Actuator, Solder Termination

Features

- Long operating life
- Elongated mounting hole for easier, more accurate mounting
- Choice of actuation (plunger, as well as a variety of integral and auxiliary actuators)
- Choice of electrical termination (solder, quick connect, PCB)
- Choice of operating characteristics (sensitive differential travel as low as 0,0254 mm [0.001 in] maximum, low operating force to 0,56 N [2.0 oz] maximum)
- Optional series constructions available (gold contacts for low energy switching, bifurcated gold contacts for maximum reliability, power load switching capability to 11 A)
- MIL-PFR-8805 qualified listings available

Potential Applications

- Aerospace
- Instrumentation
- Appliances
- Vending machines
- Timing devices
- Office equipment
- Computer/business equipment
- Test instruments
- Medical/dental equipment
- Communications equipment
- HVAC equipment
- Manually operated devices
- Valves

Description

MICRO SWITCH™ SM Series subminiature basic switches are used for simple or precision on/off application needs. The MICRO SWITCH™ SM Series switches are slightly larger than the MICRO SWITCH™ SX Series switches. These switches combine small size and light weight with ample electrical capacity, precision operation and long life.

Product Specifications

Product Specifications	
Switch Type	MICRO SWITCH™ Subminiature 12,7 mm H x 6,35 mm W x 20,3 mm L [0.5 in H x 0.25 in W x 0.8 in L]
Sealed	No
Ampere Rating	4 A
Circuitry	Single Pole Double Throw (SPDT)
Actuator	Straight Lever
Termination	Solder

Operating Temperature Range	-55 °C to 125 °C [-67 °F to 257 °F]
Voltage	250 Vac
Approvals	CE,CSA,UL,ENEC
Actuator Length	14,35 mm [0.565 in]
Contact Type	Silver
Operating Force (O.F.)	0,11 N [0.4 oz] max.
Release Force (R.F.)	0,02 N [0.07 oz] max.
Pretravel (P.T.)	3,05 mm [0.120 in] max.
Overtravel (O.T.)	0,66 mm [0.026 in] min.
Differential Travel (D.T.)	0,38 mm [0.015 in] max.
Operating Position (O.P.)	8,51 mm ± 2 mm [0.335 in ± 0.080 in]
Housing Material	General Purpose Phenolic
High Temperature	204 °C [400 °F]
CE mark	61058-1
UL File #	E12252
CSA File #	LR41372
Agency Approvals and Standards	1054
Mounting Centers	9,65 mm [0.38 in]
Maximum Tightening Torque	0,26 N m [2.3 in lb]
Weight	2,72 g [0.006 lb]
Package Height	12,4 mm [0.49 in]
Package Width	6,35 mm [0.25 in]
Package Length	19,8 mm [0.78 in]
Recommended For	14,35 mm [0.565 in] straight lever, Lower force
Availability	Global
UNSPSC Code	30211905
UNSPSC Commodity	30211905 Snap switches
Series Name	SM

MICRO SWITCH

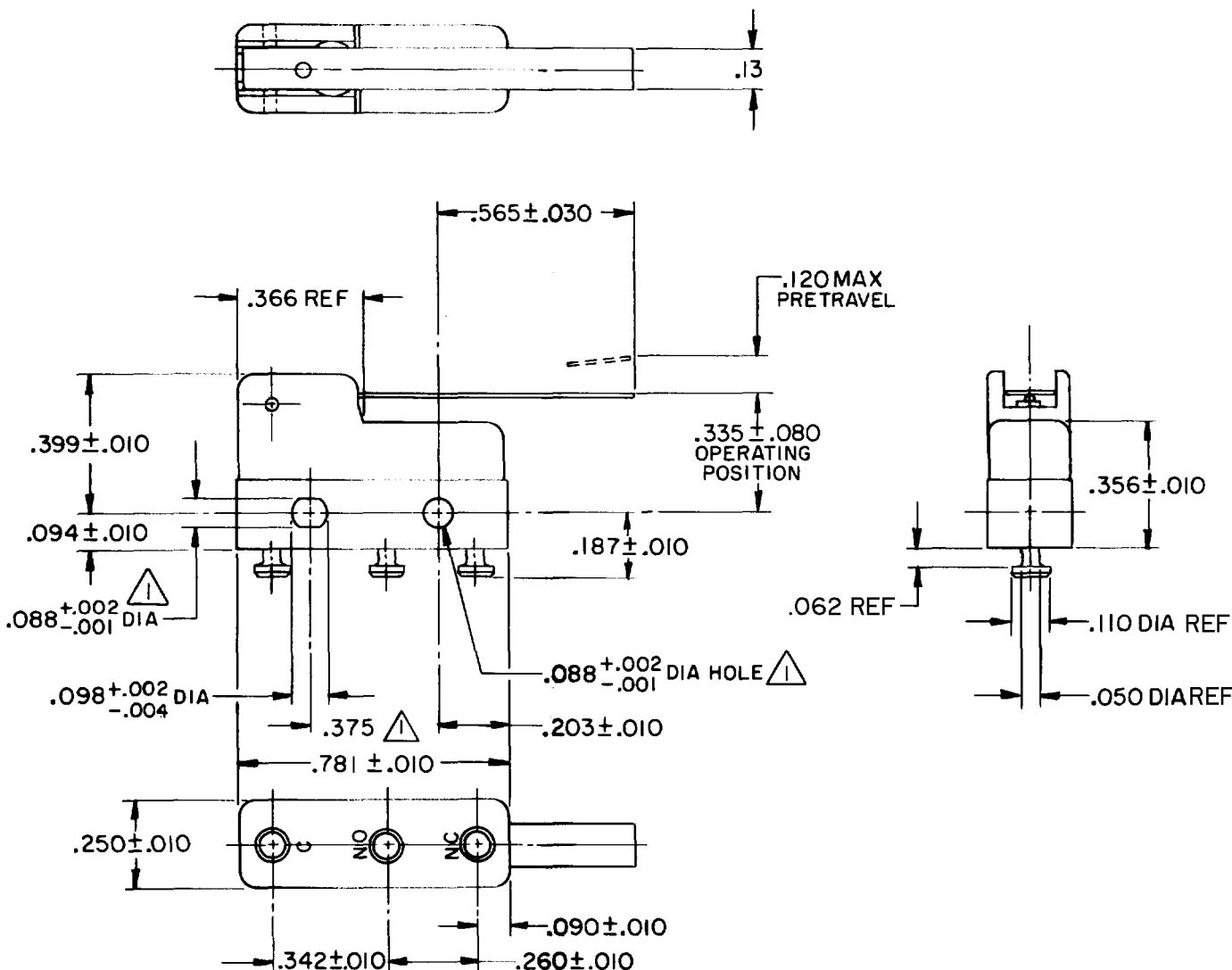
FREEPORT ILLINOIS, U.S.A
A DIVISION OF HONEYWELL
FED. CODE. CODE 91929

SWITCH - BASIC

CATALOG LISTING

31ISM702-T

DRAWING NUMBER **31ISM702-T**
 PAGE 1 OF 1
 RELEASE NO. PR-1354
 REPLACES
 ISSUE **M**
8
 REVISIONS
A C031079 R E R 27 NOV 72
B CO 45875 D J S 18 APR 79
C CO-95172 J J A 21 JUNE 99
D C095591 D L T 28 OCT 99
 CHECK 72
 CHECK PRV 8 DEC '72
 CHECK LSP 8 DEC '72
 DRAWN
FORMTEK
 FO-52848
 R E R 27 NOV 72



- NOTES**
- 1- MOUNTING HOLES WILL ACCEPT PINS OR SCREWS OF .087 MAX DIA ON .375 ± .002 CENTERS
 - 2- SWITCH WILL WITHSTAND TEMPERATURE OF 250°F
 - 3- TERMINALS ARE PLATED FOR SOLDERING

THIS DRAWING COVERS A PROPRIETARY ITEM AND IS THE PROPERTY OF MICRO SWITCH, A DIVISION OF HONEYWELL. THIS DRAWING IS NOT TO BE COPIED OR USED WITHOUT THE APPROVAL OF MICRO SWITCH.

CHARACTERISTICS	ELECTRICAL DATA	SCALE 2 TO 1
OPERATING FORCE - - - - - 12 GRAM MAX	CONTACT ARRANGEMENT S P D T	DO NOT SCALE PRINT
RELEASE FORCE - - - - - 2 GRAM MIN	30 VOLTS DC RATING	UNLESS OTHERWISE NOTED DIMENSIONS ARE IN INCHES
DIFFERENTIAL TRAVEL - - - - .015 MAX	INDUCTIVE - - - - SEA LEVEL - 3 AMP 50,000 FT - - 2.5 AMP	TOLERANCES ARE
OVERTRAVEL - - - - - .026 MIN	RESISTIVE - - - - SEA LEVEL - 5 AMP 50,000 FT - - 5 AMP	ONE PLACE (.0) ± .030
	MAXIMUM INRUSH - - - - - 24 AMP	TWO PLACE (.00) ± .015
	L119	THREE PLACE (.000) ± .005
	4A 250 VAC	ANGLES ±
		WEIGHT .006 LB MAX